



Mustang Writing Camp

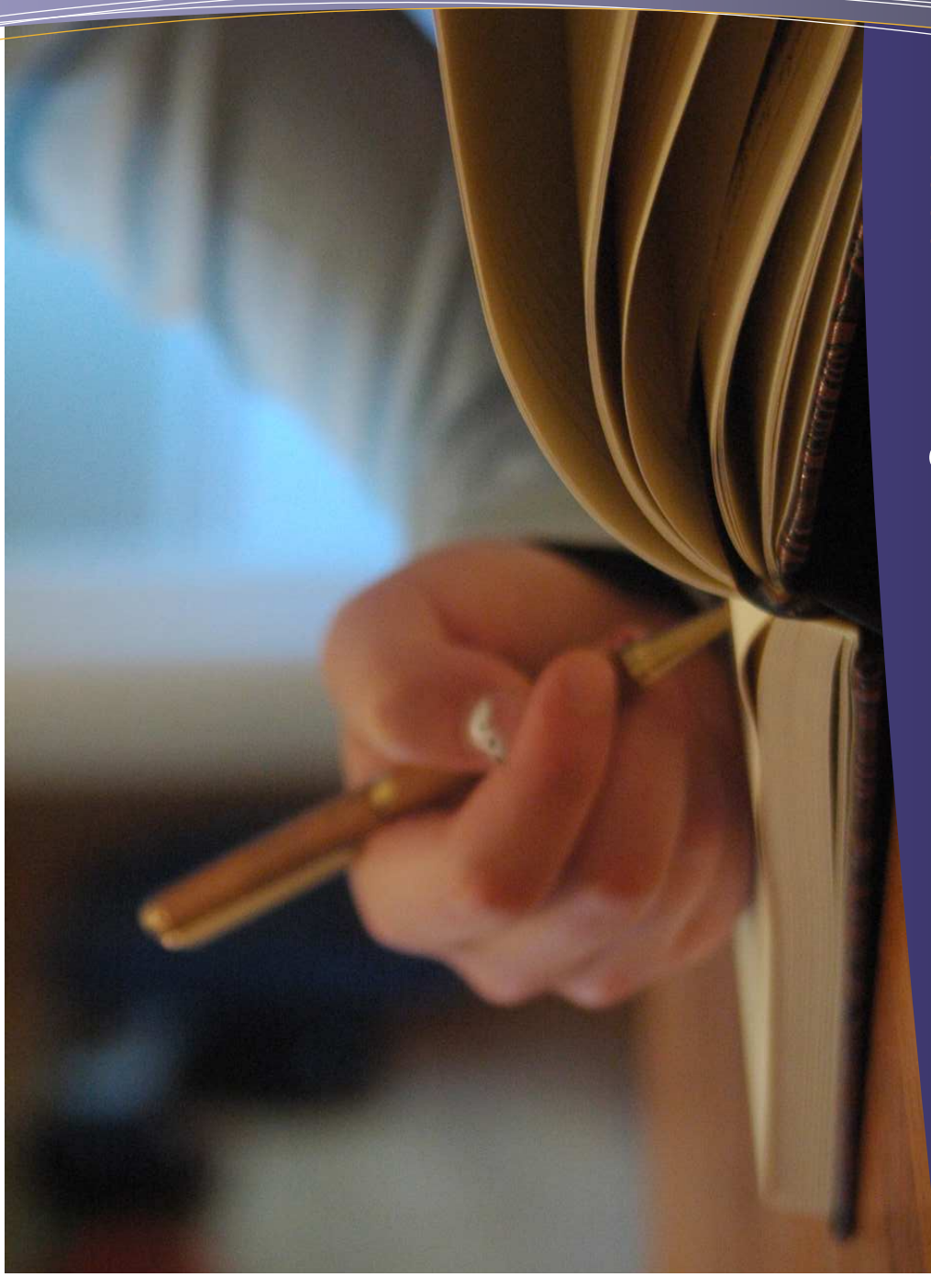
August 3-7 2009

Registration

Registration is open to any student in grades 7-12 for the 2009-2010 school year, and needs to be completed by *Wednesday, July 29*. There is a \$25 fee which is due by the first day of camp. Please make any checks payable to Kirstin Genthner or Elizabeth Valente.

Name: _____
Email: _____
Grade for 2009-2010 School year: _____ Phone: _____
Parent's Name: _____
Parent's Email: _____
Address: _____
City: _____ Zip: _____

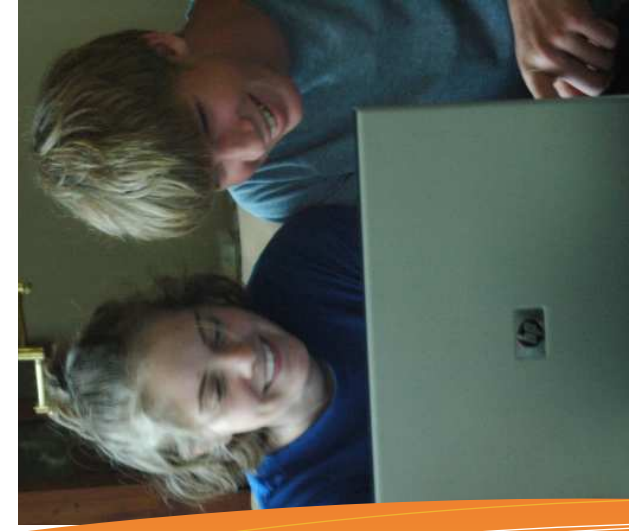
If you have any questions concerning the MWC please contact Elizabeth Valente (eavalente@gmail.com) or Kirstin Genthner (kirgenthner@gmail.com).



Summer 2009



Trinity Lutheran School
4900 McCain Road
Jackson, MI 49201
Phone: 517-750-2105
www.tlsjackson.com



2009 Mustang Summer Writing Camp

OFFERING AN EXCITING OPPORTUNITY FOR TEENS TO EXPLORE WRITING

We are pleased to announce the first Mustang Summer Writing Camp. The camp is an opportunity for junior high and high school students to come together and expand their knowledge of writing, and to enjoy experiences that inspire their writing. Kirstin Genthner and Elizabeth Valente have designed a week long program geared specifically at writing both fiction and poetry. Each student will be expected to contribute one piece of writing to the MSWC anthology, which

will be published at the end of the week. Along with personal writing time, mini-lessons will be offered to help writers hone their craft. Attendees will also participate in writing groups where they can give and gain feedback on their writing experiences. Along with working on site at Trinity Lutheran School, we will take a day to experience a Writing Marathon at Ella Sharp Park and Museum. Teens who love to write can't miss this exciting opportunity!

WEEKLY SCHEDULE

- MONDAY, AUGUST 3: 9 AM—12 PM
- TUESDAY, AUGUST 4: 9 AM—12 PM
- WEDNESDAY, AUGUST 5: 9 AM—12 PM
- THURSDAY, AUGUST 6: 9 AM—1 PM
(LUNCH IS PROVIDED)
- FRIDAY, AUGUST 7: 9 AM—11 AM



Learning to Live the Writerly Life

IN TODAY'S WORLD

What will our days look like?

We will begin Monday through Wednesday morning with a few snacks and goodies, and then dig right in to writing with Sacred Writing Time. During SWT prompts will be provided to spark the imagination and to oil the wheels of your writing machine. We will then go directly into a mini-lesson prepared and presented by either Mrs. Genthner or Mrs. Valente that will focus the writing for that day. The remaining time will be spent writing or responding to writing in writing groups.

What about Thursday? What is a Writing Marathon?

On Thursday we will go off site to do a Writing Marathon at Ella Sharp Park and Museum. Much like a typical marathon pushes your endurance to the extreme, a Writing Marathon is designed to push your endurance as a writer. We will explore the park and museum in small groups looking for ideas to write, taking short stops to generate some writing on those ideas and to share some of what we wrote with our small group. The big idea is to practice looking at the world as a writer, and to find the stories, poems, etc. that are hiding around every corner.

What should I bring with me to the MSWC?

Most of what you need will be available when you arrive, but if you have a preferred mode of composing (a laptop, journal, favorite pen, etc.) you will want to bring that. You will have access to the TLS computer lab and will be provided with a notebook for writing during the camp.

Morning refreshments will be available from 8:30—9:00 a.m. for those who would like to come a little early to work on their projects. Afternoon snacks will also be available to keep writers fueled up. On Thursday lunch will be provided.

How do I register and how much will it cost?

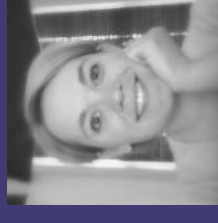
There are two ways to register. You can go to www.tlsjackson.com and follow the link for the 2009 Mustang Writing Camp. Within 24 hours of submitting your online registration form, you will receive an email confirmation. The other way to register is to fill out the form on the back of this brochure and send it to Trinity Lutheran School, Attn: Elizabeth Valente, 4900 McCain Road, Jackson, MI 49201. There is a \$25 fee for each participant to cover the cost of food, materials, and admission to Ella Sharp Museum. Please make checks out to Kirstin Genthner or Elizabeth Valente.

THE INSTRUCTORS



Kirstin Genthner

Kirstin Genthner teaches English and History at Napoleon High School. She recently completed her Master's of Fine Arts in Professional Writing at Western Connecticut State University. She's a little crazy and loves to stay busy, so she also copy edits for Miranda Literary Magazine and mentors for WCSU's MFA in Professional Writing. If you want to know too much about her, you can check her blog at www.wrinklepage.blogspot.com.



Elizabeth Valente

Elizabeth has been a teacher for 11 years in the middle grades at Trinity Lutheran School. For the last three years she has been responsible for teaching all of the writing courses in grades 5-8 at Trinity. She is a certified Teacher Consultant with the Red Cedar Writing Project, which is a division of The National Writing Project.